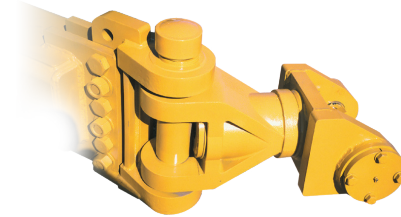


819/821/825 PULL TYPE SCRAPERS

The ICON Pull Type Scraper offers

- Maximum durability, operator friendly control, swingwall patented eject, super duty Quick-hitch, and a combination of innovative features and benefits not found on any other scraper.
- The durable, functional, and eye appealing design give the contractor a cost effective machine with profitable return on investment and a strong resale value for the future.
- The ICON Scraper is fully assembled, lubed, filled with hydraulic oil, and checked at the factory before shipping, making the machine ready for the job on delivery to the customer. After 36 to 48 hours on the job, a quick check and adjustments are then made by dealer service.
- All ICON 800 Series Earthmovers have a nine-month warranty.
- Tandem configuration capability with Quick-hitch on the rear of the lead scraper for fast and safe, one man mount/dismount. Two valve sequencing hydraulics for rapid operation and operator friendly control.
- Industrial cylinders and 4000-psi hydraulic hoses throughout the scraper provide positive response and longevity.
- The front gate and eject wall are finished in dirt rejecting epoxy and feature the ICON patented swingwall eject for quick and clean cycles.
- A large push block is standard.
- Cushioning the haul is accomplished by a hydraulic accumulator.
- Hydraulic operation of the gate and wall is controlled by a synchro-sequencing valve.
- Double wall design and high tensile steel where needed.
- Hydraulic disc brakes are standard.
- The durability designed into the 800 Series starts at the front of the machine with the ICON Quick-attach cast hitch. Convenience and safety are built into this 360° swivel hitch with one-man mount/dismount and rollover protection.



SPECIFICATIONS

Model	819	821	825
Empty Weight	28,000	28,900	33,500
Bowl Cap. Struck	17.3	18.4	21.7
Bowl Heaped	19	21	25
Width of Cut	10'	11'	13'
Overall Width	10' 11"	11' 11"	13' 11"
Overall Length	28' 3"	29' 3"	29' 3"
Height with Bowl on Ground	91"	91"	90"
Ground Clearance	18"	18"	18"
Style	Eject - Front Lowering	Eject - Front Lowering	Eject - Front Lowering
Number of Tires	2	4	4
Tire Size	(2) 29.5 x 25	(2) 20.5 (2) 23.5	(2) 23.5 (2) 26.5
Max. Horsepower	600	600	600
Brakes	Hydraulic Standard	Hydraulic Standard	Hydraulic Standard
Hitch Type	Cast 360	Cast 360	Cast 360
Depth Gauge	Standard Electric in Cab	Standard Electric in Cab	Standard Electric in Cab
Cutting Edges	CAT Replaceable	CAT Replaceable	CAT Replaceable